

F L O A T I N G S Y S T E M

SYSTEM FEATURES AND BENEFITS

A floating sports floor system providing shock absorption, consisting in general of a vapor barrier, PVC pads, wood subflooring, maple flooring, sanding, sealers, finishes, game lines and wall base.

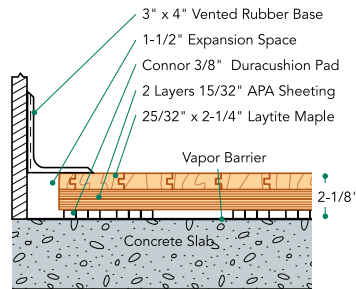


- ① 3/8" Duracushion PVC resilient pads
- ② Two layers of 15/32" APA rated plywood subfloor

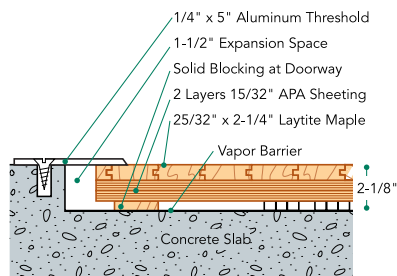
SPECIFICATIONS

MANUFACTURING	ISO 9001:2000 CERTIFIED
SYSTEM TYPE	Floating System
ANCHORAGE	No concrete attachment
SUBFLOOR CONSTRUCTION	Plywood Panel
RESILIENCE	PVC Pads
SLAB DEPRESSION	3/8" pad: 25/32" flooring – 2 1/8" 33/32" flooring – 2 3/8" 5/8" pad: 25/32" flooring – 2 3/8" 33/32" flooring – 2 5/8"
TESTING LABORATORY	United States Sports Surfacing Laboratory 
CERTIFIED TESTING	Laboratory test equipment calibrated and certified through the ISSS 
GREEN STATUS	Managed forests, certification available

WALL BASE DETAIL



THRESHOLD DETAIL (optional accessory)



EQUIPMENT DETAIL (optional accessory)

